

PREDICTOR

PACKARDS INTERNATIONAL
MOTOR CAR CLUB

SAN DIEGO REGION

Volume 21

May-June 1996



1932 901 Sedan
Senior "Circle of Champions"
R.E. (Tony) Collins & Barbara June (BJ) Hill

BOARD

President	Colin Fort 753-5724
Vice President	Dorothy Hagen 479-7300
Secretary	Ferne Coombs 486-4579
Treasurer	Mark Rothermich 583-2369
Membership	Dick Hagen 479-7300
Historian	Joan King 276-3673
National Board Rep.	Fred Perkins 942-2460 966-0190 (W)
Projects/Sales	B.J. Hill 451-0670 530-1414 (W)
Technical	Mark Ballerini 434-4737 Tony Collins 451-0669 packards@aol.com
Predictor	Bobbie McNicol (541) 758-6074 mcnicolb@ucs.orst.edu
San Diego Region Office	(619) 530-1414



Sandy Sanford speaks on "Packards and the Internet"

Regular meeting
June 6, 1996
Packard's Grille
I-15 and Miramar Road
6:00 dinner, 7:00 meeting

PRESIDENT'S MESSAGE

Clipper Fans:

Dick Hagen informs me that we now have 65 members in the Region, with a couple of applications pending. Keep the Club in mind whenever someone mentions the magic word "Packard." We have so much to offer with the programs at the monthly meetings and the excellent tours planned for the year. The Board has voted to renew our membership in the Association for California Car Clubs. We need to protect our hobby from the crusher, and the Association acts as our eyes and ears when it comes to the latest legislation affecting automobiles. It lobbies for our interests in Sacramento. I have noticed in other publications that this type of association has caught on across the country.

May 27 is the annual show in Fallbrook. It will be here before you know it! The Club will provide the hot dogs, and we ask that members bring according to the following schedule: last name A-D, desserts; E-G, chips and dips; H-Z, salads. This is the opportunity to see an excellent cross-section of cars from all eras. If you want to hook someone on the hobby, bring him or her to Fallbrook. We are in booths 30-31.

Please mark June 9 on your calendar. Packard is theme car at this year's show in Deer Park. Hopefully, can show up in force and dazzle them with the class and variety of cars we have in the Region. I understand SoCal is also invited to Deer Park. The CHVA show is scheduled this year for June 16. We usually have a nice showing, and it is a good day to drive to Temecula and take in the antique shops.

Sincerely,

Colin Fort

Our cover picture...

1932 901 Packard Sedan

BJ Hill & Tony Collins

Third in Class Prewar Senior Circle of Champions
National Membership Meet 1996

Restoration: Packard Garage, Fred Perkins

The Southern California Region of

Packard's

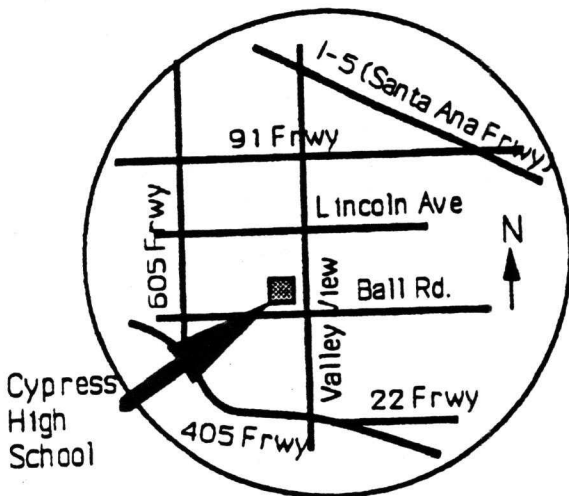
INTERNATIONAL

presents it's

21st Annual Swap Meet and Parts Exchange

Sunday May 19, 1996
7 am to approximately 2 pm

Cypress High School
9801 Valley View (between Lincoln Ave. and Ball Rd.)



Packard Parts and Packard Related Materials Only.

Several Restaurants and Fast Food Houses nearby.

Coffee, Donuts, Juice, Soft Drinks, and other snacks will be available at the meet.

Free Admission for all buyers.

Swap Spaces (equivalent to two car parking spaces, approximately 15ft x 15 ft) available for \$20.00 each.

Car for Sale Spaces (two parking spaces to permit proper display) available for \$20.00 each.

Seller Arrival at 6 am.

Pre Registration is not required. Registration at the gate beginning at 6 am.
Checks to be made payable to the Southern California (So Cal) Region of Packards International

For further information contact: W. Johnson, 302 French St. Santa Ana, CA 92701 (714)533-1287

Club - Chicago Hot Dogs BRING CHAIRS

DRINKS

31st Annual

Fallbrook Vintage Car Show

Lunch - Pot Luck Celebrating the

A-D = Desserts 100TH ANNIVERSARY

E-G = Chips/Dip

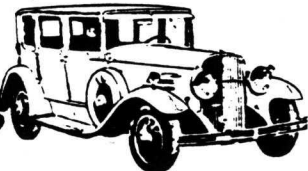
Spaces 30-31

AMERICAN AUTOMOBILE

Sunday, May 26, 1996

★ H-Z = SKAAs

Bring
Coolers



Location: Both events are at the Fallbrook High School, Facing S. Mission Road

Auto Show: 7 am - 3 pm -- \$5 Car Entry Fee - No gate charge to spectators

Entries close 11 am. Show open to all automobile through 1965, regardless of club affiliation. Owners who have no club connection also welcome. All entries must be driven onto the field and stay on the field between 11:30am and 3 pm for judging and spectators' safety. Vehicles will be displayed on spacious grassy field for showing and judging. Vehicles must be present at 3pm to receive trophies.

Car and Parts Swap: 6 am - 3 pm -- \$20 Pre-registration fee

Only car or motorcycle parts and related items may be displayed and sold. Spaces are approximately 20'x20'. Space limited so please pre-register. Vehicles that cannot be parked in paid space must be removed from the field. Participants to observe all applicable state and local laws relative to this event and must have valid seller's permit. Swap spaces must be pre-paid on or before May 1st to insure a spot. Note: Construction at the high school may cause field layout changes.

Please select Car Entry or Swap Space -- One car per form (you may copy this form, or add cars on the back)

Note: Entry form or swap space request must be received by May 1st, or additional \$5 fee required

CAR SHOW ENTRY - \$5

SWAP SPACE - \$20

For information call Virgil Cochran at 723-4677

For information call Diane Doherty at 728-1616

Name _____

Address _____

City _____ State _____ Zip _____

Year of Vintage Car _____ Make _____

Swapper Only- Seller's Permit # _____



MAIL TO: FVCC P.O. Box 714, Fallbrook, CA 92088

JULY 7 TOUR

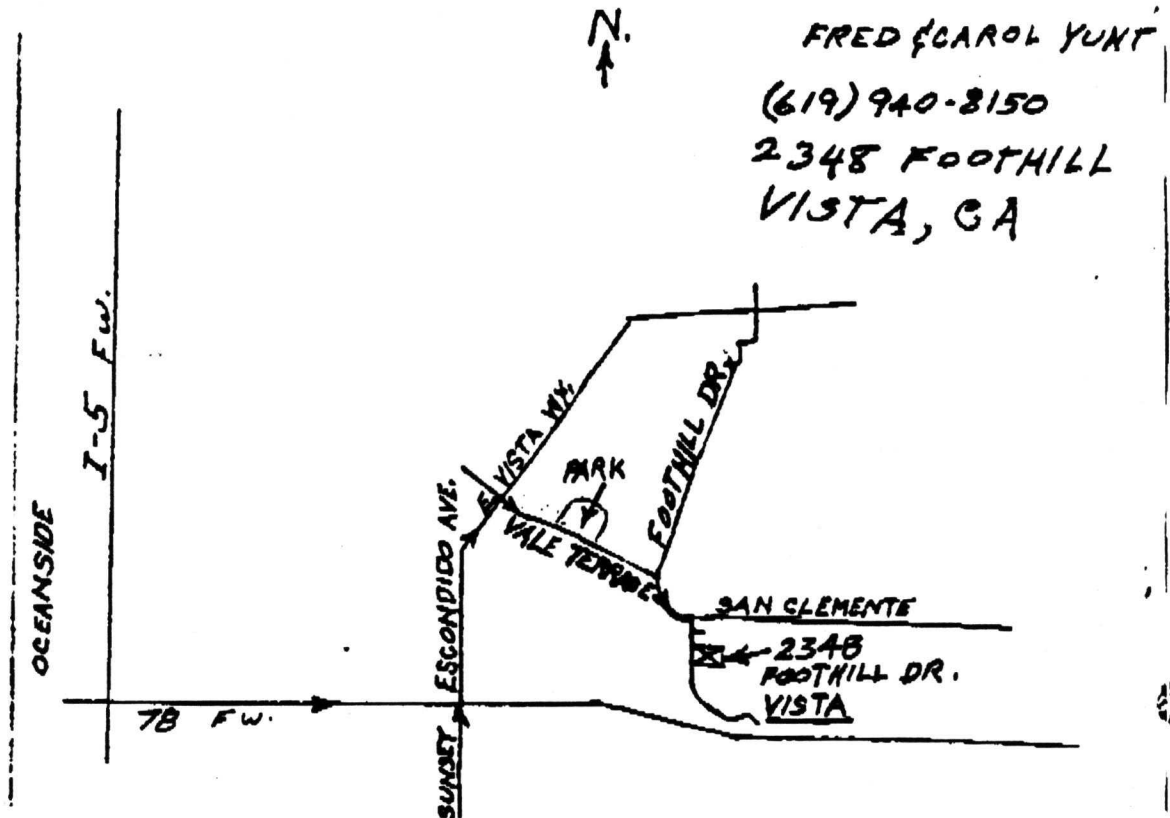
**PLEASE JOIN US FOR A RETURN TO THE
"DAYS OF THE DONS"**

Meet at Carol Yunt's between 9:00 and 9:30 a.m. for coffee and ?? At 10:30 a.m., we will caravan to Vista's own beautiful Rancho Vista Adobe, located on the last of 1.9 acres of the original Mexican land grant. The home is completely furnished with turn-of-the-century antiques, including the kitchen areas. After a guided tour at 11:00 a.m., we will enjoy a catered box lunch in the beautiful gardens around the patio and fountains.

You are welcome after lunch to return to Carol's to relax, visit, tour the barn and Fred's memorabilia, and enjoy cookies, lemonade, or coffee.

We do need an RSVP for this tour, as the box lunches are catered. You have your choice of a turkey breast sandwich, egg salad, or an angel-hair pasta. All come with trimmings, of course. Please designate your choice when you call.

All this for the price of \$10.00 per person. Please respond to Carol Yunt at 940-8150 no later than June 26. We look forward to seeing you for this trip back into time.



Concours Entry Application

Application for the 1996 Spring Deer Park Concours d'Elegance are being accepted now. The Concours d'Elegance Committee will choose from the entries after April 30, 1996. Letters of acceptance will be mailed by May 31, 1996. Remaining available spaces will be filled at the Committee's discretion. Classes may be added or combined depending on the number of entries. Dash plaques will be given to all entrants and trophies awarded to the first three places in each class.

Procedure:

1. Please enclose entry fee of \$20 with your application. Make check payable to Deer Park Concours d'Elegance Committee. This includes entry for two persons.
2. Please enclose a photo of your car with make, year, your name, and city written on the back.
3. Please sign release of liability.
4. Detach application along the dotted lines and mail to:

Deer Park Concours
P.O. Box 7234
San Diego, CA 92167

Release of Liability

In consideration of participation by the undersigned in the Concours d'Elegance to be held at Deer Park, Escondido, California on June 9, 1996, the undersigned agrees to forever protect, save and keep Deer Park and all their members, officers, agents, servants, employees and assigns, holding them harmless and indemnifying them against and from all claims, demands, losses, costs, wages, suits, judgements, penalties, expenses or liability of any kind or nature whatsoever arising directly or indirectly out of or in connection with my participation in the Event, and I further release and discharge Deer Park and each of the persons and the entities referred to herein of and from any acts of the aforesaid in connection with the Event.

Signature of Owner Date

Signature of Exhibitor Date

Please enclose a good quality black and white glossy photo of your car. It may be used for publicity purposes.

Deer Park Spring Gathering On The Green to be held June 9, 1996 on the green at Deer Park, Escondido, Calif.

You are cordially invited to participate in the festivities, and to display one or more of your automobiles for this very special day at the "Park."

The emphasis at Deer Park's Concours will be on classic, antique, sport, and special interest cars in original condition or restored to Concours d'Elegance standards. We expect approximately 125 automobiles in the following classes:

Antique and Horseless Carriage (through 1915)	Italian Sports
Vintage (1916 through 1931)	German Sports
Contemporary (1932 through 1948)	British Sports
Contemporary (1949 through 1960)	Vintage Racing
Classic Car (Open)	Muscle Cars
Classic Car (Closed)	
Special Interest Cars	
American Sports (1953 through 1963)	
American Sports (1964 through 1970)	

The show will be conducted at Deer Park's "Park;" 15 acres of lawn, oak trees, orchards and vineyard, winetasting room, gourmet market and delicatessen. Deer Park's unique car museum and many events will be available to make this a special day for you and your family. The new winery building housing the display of cars of the fifties will also be open.

Schedule of Events

7:00 am	Gate Open to Car Entrants
7:00 am - 9:30 am	Placement of Cars
9:30 am	Judging Commences
10:00 am	Gate Opens to Public
11:00 am - 3:00 pm	Live Entertainment
11:00 am - 3:30 pm	Chicken d'Elegance Dinner Available, Charity Wine Tasting by Motor Transport Museum
11:30 am - 3:30 pm	Bar-B-Que Hamburgers & Hotdogs Available
2:00 pm	Period Costume Competition & Vintage Fashion Show
3:30 pm	AWARDS PRESENTATION

TACHOMETER - ELECTRIC (CONT)

2. ELECTRIC: HAS SENDING UNIT LOCATED IN BACK OF DASH, OR IN DISTRIBUTOR AREA AND TAKES SIGNAL FROM DISTRIBUTOR, AND UTILIZES BACK EMF (ELECTO MOTIVE - FORCE) THEN SENDS A SIGNAL TO TACHOMETER INDICATOR. MOST INDICATORS USE THE MOVING COIL, PLUS HAIRSPRINGS TO CARRY VOLTAGE AND RETURN POINTER TO ZERO.

NOTE: MOST TACHOMETER UNITS ARE MATCHED WITH SPECIFIC SENDING UNITS SO IT IS NOT ADVISABLE TO "MIX" - SENDING UNITS.

E. AMMETER

THE AMMETER IS USED TO INDICATE THE AMOUNT OF CURRENT BEING PUT INTO OR - WITHDRAWN FROM THE BATTERY.

THE TYPICAL AMMETER CONSISTS OF A PERMANENT MAGNET, WITH A PIVOTED IRON VANE TO WHICH A NEEDLE IS ATTACHED - PLUS A HEAVY CONDUCTOR (TO BY PASS MOST OF THE HEAVY CURRENT).

WHEN NO CURRENT FLOWS TO OR FROM THE BATTERY, THE PIVOTED VANE IS HELD BETWEEN THE TWO POLES OF THE PERMANENT MAGNET, AND NEEDLE INDICATES ZERO.

WHEN THE CURRENT DOES FLOW, IT PASSES THROUGH THE CONDUCTOR. THIS CURRENT PRODUCES A MAGNETIC FIELD AROUND THE CONDUCTOR AND FORCES THE VANE (WITH POINTER ATTACHED) TO MOVE. THE STRONGER THE CURRENT, THE FARTHER THE POINTER MOVES.

IF CURRENT IS FLOWING TO THE BATTERY THE NEEDLE SWINGS TO THE "CHARGE" SIDE. IF CURRENT IS FLOWING FROM THE BATTERY, THE NEEDLE SWINGS TO THE "DISCHARGE" SIDE.

F. FUEL GAUGE (ELECTRIC)

1. WITH THE INVENTION OF A RELIABLE FUEL PUMP, THE GAS TANK COULD BE STOWED SAFELY AND MORE CONVENIENTLY - UNDER REAR OF CAR -- SO THE MECHANICAL FUEL GAUGE, WAS QUICKLY REPLACED BY THE ELECTRIC FUEL GAUGE.

2. THE GAS TANK SENDING UNIT CONSISTS OF A FLOAT (CORK OR BRASS) ATTACHED TO A LENGTH OF "COAT HANGER SIZE" WIRE AND A SLIDING CONTACT (ON THE OTHER END), THAT SLIDES BACK AND FORTH ON A FLAT MICARTA..WIRE WOUND RESISTOR. THIS IS A.."SPECIAL HIGH RESISTANCE" WIRE OF APP. 42 OHMS PER FOOT, AND WILL VARY, FOR DIFFERENT VOLTAGES FOR GAS TANK AND FUEL GAUGE - APPLICATIONS.

FUEL GAUGES (CONT)

BASIC TYPES OF FUEL GAUGES --

THERE ARE TWO DIFFERENT TYPES OF FUEL GAUGES, "BALANCING-COIL" AND "THERMOSTATIC".

1. "BALANCING-COIL" - SYSTEM

NOTE: HAS TWO COILS, A IRON PIVOTED, MOVING ARMATURE (WITH POINTER ATTACHED).

PRINCIPAL OF OPERATION -- (BALANCING COIL - TYPE)

AS THE FLOAT MOVES UP AND DOWN IN THE FUEL TANK, THIS CHANGES THE AMOUNT OF ELECTRIC RESISTANCE, THE TANK UNIT OFFERS. THUS AS THE TANK EMPTIES, THE FLOAT DROPS AND THE TANK UNIT MOVES TO REDUCE THE RESISTANCE. THE POINTER THEN SWINGS AROUND - TO INDICATE TOWARD THE "E" (EMPTY) SIDE OF THE DIAL.

2. "THERMOSTATIC" - SYSTEM

NOTE: INSIDE GAUGE IS A PAIR OF THIN (BI-METALLIC METAL) BLADES, EACH WRAPPED WITH "THREAD SIZE" - HEATING WIRE. LOWER PART OF "BLADES" ARE CONNECTED THROUGH LINKAGE..TO THE POINTER.

PRINCIPAL OF OPERATION -- (THERMOSTATIC)

AS THE FLOAT, IN THE FUEL TANK, MOVES UP AND DOWN..THE WIRE WOUND RESISTOR WILL SEND A SIGNAL (IN THE FORM OF VOLTAGE) - TO THE BI-METALLIC STRIPS..IN THE GAUGE. THE RESISTANCE IS LOWEST WHEN THE TANK IS FULL, AND THE INCREASE IN CURRENT FLOW - HEATS THE GAUGE'S BI-METALLIC STRIP TO PRODUCE THE "FULL" READING.

G. CLOCKS (MECHANICAL TYPE)

THE "OLDER" PACKARDS WILL HAVE A JEWELLED WIND UP CLOCK THAT WILL RUN FOR 8 DAYS PER WINDING. THIS IS A WELL MADE CLOCK AND SHOULD BE REPAIRED BY A COMPETENT - WATCHMAKER.

G. CLOCKS (ELECTRIC)

THE "LATER" PACKARDS WILL USE A ELECTRIC CLOCK AND AS I HAVEN'T SEEN ANY OF THEIR ELECTRIC CLOCKS, AM SURE THEY ARE MADE BY THE..BORG COMPANY. THIS COMPANY ALSO, MAKES CLOCKS FOR, MANY OTHER - CAR MANUFACTURERS.

CLOCK OPERATION --

THE ELECTRIC CLOCKS WORK ON A "SPRING AND CONTACT" PRINCIPAL

SPRING HAS A SET OF CONTACTS ON ONE END WILL "WIND DOWN" AFTER APP 1,1 MINUTE. (NOT THE 6 MIN TIME-WE HAVE BEEN TOLD) THEN CONTACT ENGAGES - "ENERGIZING" COIL..REWINDING THE SPRING.

CLOCKS - ELECTRIC (CONT)

NOTE: THESE "SPRING AND CONTACT" TYPE CLOCKS, CAN BE A DRAIN ON YOUR BATTERY AS THEY REQUIRE - 3 AMPS TO OPERATE!

SOLUTION: THESE WORN ELECTRIC MOVEMENTS CAN BE REPLACED WITH A QUARTZ MOVEMENT, THAT ONLY REQUIRE .01 AMP TO OPERATE PLUS ARE MUCH MORE DEPENDABLE AND ACCURATE. (YOU USE YOUR PACKARD CLOCK CASE, DIAL AND HANDS.

RECOMMENDED LOCATIONS OF "INSTRUMENT REPAIR-SERVICE"

1..FOREIGN SPEEDO
2246½ UNIVERSITY AVE. (NORTH PARK AREA - ACROSS FROM LUCKY
SAN DIEGO, CALIF. MARKET)
298-5278

NOTE: CAN REPAIR BROKEN -SEALED
"COPPER TUBE" INSTRUMENTS
HIGHLY RECOMMENDED

2..OLD "DOC" CLOCK
P.O. Box 2234
369 BYRD RD.
SALISBURY, NC 28144
(704) 279-6019

NOTE: REPAIRS CLOCKS & TACHOMETERS
DOES QUARTZ "CONVERSIONS"

3..INSTRUMENT SERVICES Inc.
11765 MAIN ST.
ROSCOE, ILL. 61073
1-800-558-2674

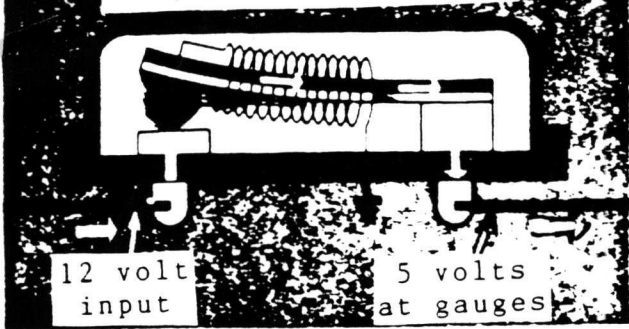
NOTE: HAS LARGE INVENTORY OF NEW..BORG
(ELECTRIC) CLOCK MOVEMENTS AND,
IS RECOMMENDED FOR DOING THE
QUARTZ "CONVERSIONS"

4..STEWART WARNER INSTRUMENTS CORP
580 SLAWIN CT
MOUNT PROSPECT, ILL 60056-2183

5..STEWART WARNER
1826 DIVERSEY PARKWAY
CHICAGO, ILL 60614
1-312-292-3000

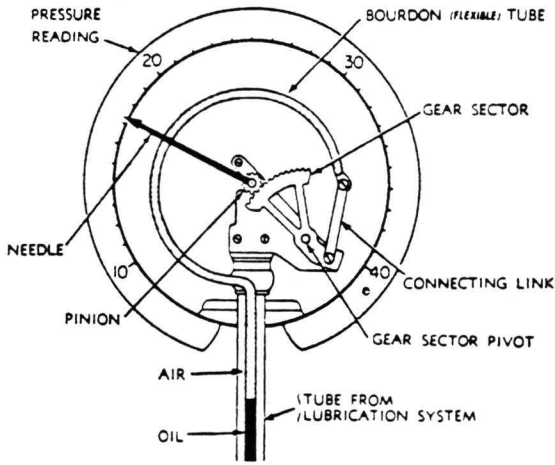
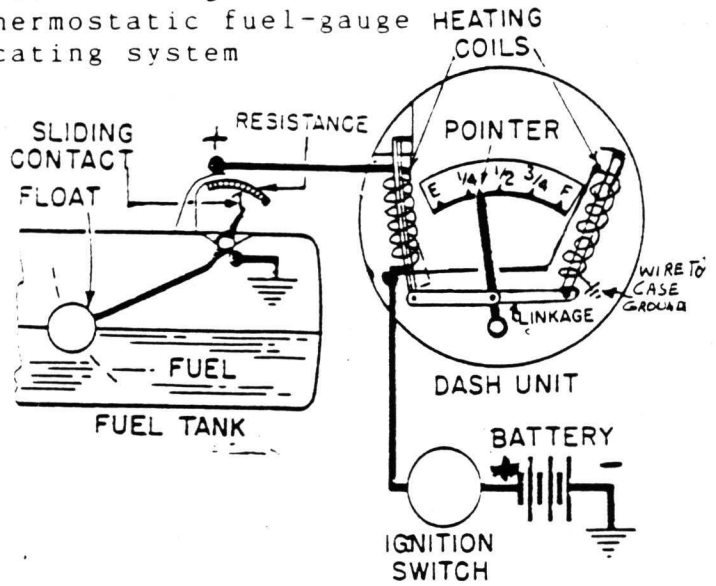
NOTE: STEWART WARNER COMPANY MAY BE OF SOME HELP, ON YOUR
PACKARD'S INSTRUMENTS BUT THEY...DO NOT OVERHAUL
INSTRUMENTS..(I KNOW AS - I ASKED THEM).

Gauge-voltage limiter

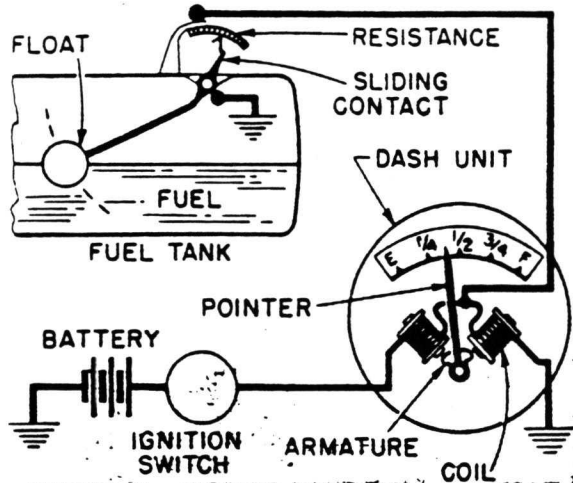


If any one of the gauges quits in your car, this little voltage limiter is a good place to start looking. It's usually in a most inaccessible position on the back of the instrument panel.

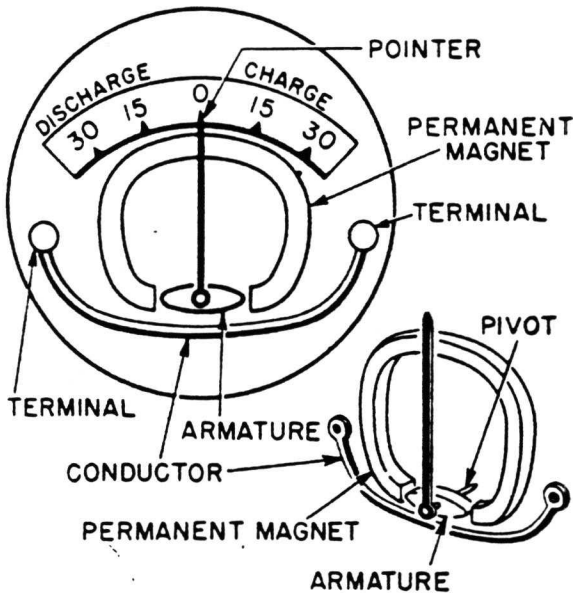
Schematic wiring circuit of thermostatic fuel-gauge indicating system



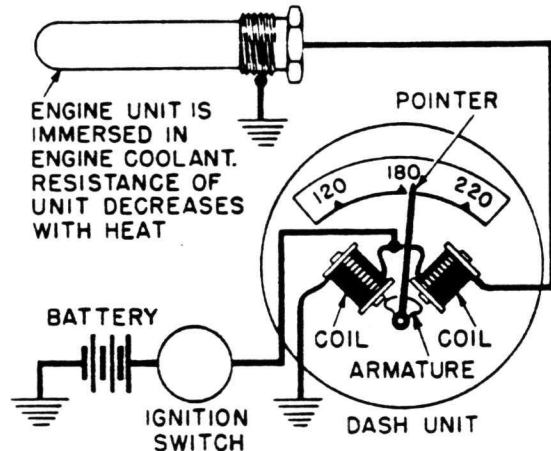
Bourdon tube and linkage to indicating needle used in pressure-expansion oil-pressure indicator.



Schematic wiring circuit of a balancing-coil fuel-gauge indicating system.



A car ammeter, or charge indicator.



Circuit diagram of electric-resistance temperature-indicator system.

WANT ADS

FOR SALE. 1951-56 Door/Handle strip handle plate lock. NOS. Outside, right side only. \$10.00 ea. Ken Yankee, 277-5659. (4-95)

FOR SALE. Trumpet horn vibrating damper brackets for 1931 or 1932. Packards with light bar. \$45.00 set. Tony, 530-1414. (3-95)

FOR SALE. Two Packard Adonis/Delphane hood ornaments. \$350 each OBO. Mary Black 723-3604 or Mark Rothermich 583-2369.

FOR SALE. Twin Six 1915/early 16. \$75,000. Renzulli collection. Call (619) 530-1414 for more info.

FOR SALE. Carribean hard-top Packard, well taken care of, can be seen at Packard garage. \$10,000. George Gerrodette, 459-2488. (12-95)

FOR SALE. 1951 Packard. Not running, valves probably rusted. Darrell Devine, 630-3352, 429-9664. (2-96)

FOR SALE. Clipper 55-56. Greg Auto Sales, (818) 967-5601. (2-96)

FOR SALE. 1953 2-door hardtop 1750 Sun Valley. Memory Lane Collector Cars. Wrecking yard, Los Angeles, Bakersfield. (2/96)

NEW FROM SAN DIEGO REGION

1950s Packard Outer Handle Retaining Plate Lock. Individual: \$25.50; 2-piece set: \$46.75; 4-piece set: \$72.25. To order, call Tony Collins (619) 530-1404 or FAX (619) 530-2123.

"It's Better To Replate It Than Replace It"



BEN'S

CHROME PLATING & METAL POLISHING

2613 TEMPLE HEIGHTS DRIVE
SUITE D

OCEANSIDE, CA 92056

BEN PATTERSON

(619)-940-8777

New Year, New Laws

Many bills that affect motorists were signed into law last year. The following became effective on or before January 1, 1996.

Red Light Enforcement: SB 833 allows cameras to be mounted at intersections to film drivers who run red lights. Notices will be sent by mail, and drivers will have the opportunity to contest the citations.

Thumbprints: Under AB 291, motorists unable to produce a driver's license or similar identification when stopped for a vehicle code violation may be required to put a thumbprint on the citation.

Lemon Law Buybacks: AB 1381 requires that the notation "lemon law buyback" appear on both the vehicle and the title when a vehicle is repurchased by the manufacturer because of a warranty defect.

Safety-Enhancement Zones: SB 414 authorizes three pilot programs designed to increase safety on designated hazardous highways. Safety violations will result in double fines. In Orange County, a pilot program will operate on portions of Route 74.

COLIN D. FORT, AEP CTFA
Vice President
San Diego Regional Manager

First American Trust Company

2100 FIFTH AVENUE • SAN DIEGO, CA 92101
(619) 515-3410 • FAX (619) 233-3837



Lyle Morton Realtors®, Inc.

5640 Baltimore Dr.
La Mesa, California 91942
24 Hour (619) 668-4494
Fax (619) 465-2438
Business (619) 464-8111

Rick Hagen
Sales Associate

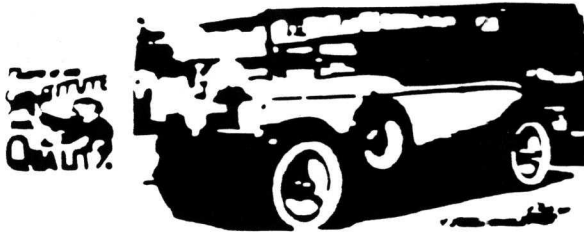


1993
Office

Each Office Is Independently Owned And Operated

LEMON GROVE PLATING

1400 CLEVELAND
NATIONAL CITY CALIFORNIA 92050



To Packards International Members:

Over the years we have established a reputation for quality plating, and a quality car deserves quality plating. I own a 1928 PACKARD Roadster and know the value you place on your parts. If you have a plating need, come in and ...

Ask The Man Who Owns One

Mrs. Billie Rhodes
President

(619) 474-4424



BRYAN PACKARD REPAIR
1040 A AIRPORT RD
OCEANSIDE, CA 92054

(619) 966-0190
FAX (619) 966-0723

FRED PERKINS

Reproduction Parts Used Parts
1035-1042 1035-1042

Packard Parts
JUNIOR MODELS & SENIOR

WALLACE WALMSLEY
(619) 283-3063

5732 BANCROFT ST. #7
SAN DIEGO, CA 92116

Packard's

INTERNATIONAL MOTOR CARD CLUB
SAN DIEGO REGION

9030 CARROLL WAY #
SAN DIEGO, CA 92121

May - June 1996



Address Correction Requested