

PREDICTOR

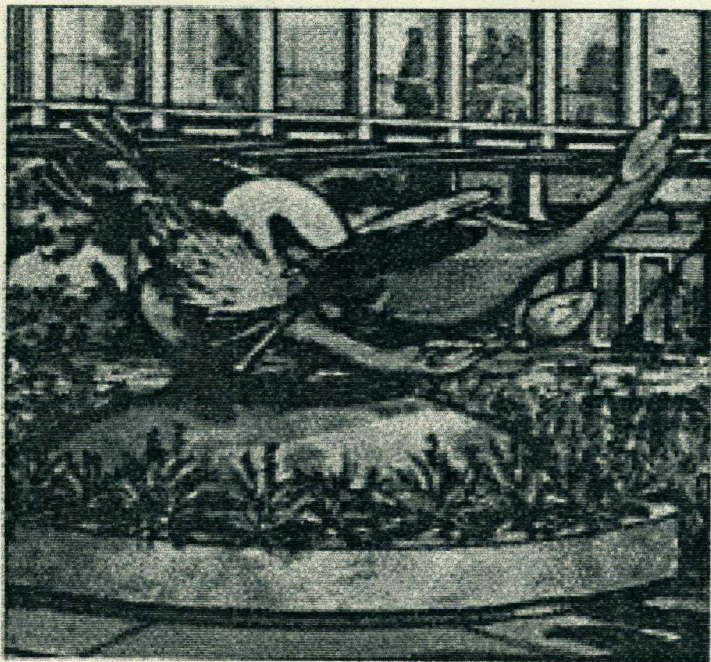
PACKARDS INTERNATIONAL
MOTOR CAR CLUB

SAN DIEGO REGION

Volume 23

January 1998

In Search of the Wilderness *Les Perhacs Fallbrook, California*



This monumental bronze sculpture is located at the foot of the outside escalators leading to Terminal 2's west pedestrian bridge. It depicts two loons in flight carrying their precious egg over a dome representing the earth. An endangered species, loons stop in San Diego on their southward migration from Alaska each year, requiring a safe, pristine environment to breed. Through efforts like the Chula Vista Wildlife Refuge, the Port of San Diego and others work to make San Diego Bay and its tidelands a safe haven for many remarkable species of wildlife.

Your Board

President/Membership/Project Sales

B.J. Hill 619/530-1414 (wk)
619/451-0570 (fax)

Vice President

Charlie Owens 760-7548841

Secretary

Ferne Coombs 619/485-4579

Treasurer

Mark Rothermich 619/583-2369

National Board Rep.

Fred Perkins 760/966-0190 (wk)
packardcars@internetMCI.com

Technical Representative

Tony Collins 619/451-0669
packards@aol.com

Predictor/Roster/Historian

Linda Owens 760/754-8841
charles@connectnet.com

San Diego Regional Office

619/530-1414(wk)



NEWS RELEASE

July 6th thru the 11th, 1999 will be the Centennial Celebration of the PACKARD MOTOR CAR COMPANY in Warren Ohio. Packards International was advised by the Packard Museum committee working on this celebration that each club would make their own arrangements. P I picked up the ball and proceeded to make their arrangements, here is what we have so far

The Cleveland Hilton Inn South has been booked. We chose this establishment as it has plenty of parking for Packards as well a trailer for those that wish to trailer their cars. The Hilton is situated close to the Cleveland airport for those wishing to fly in for the celebration, and there are many eating establishments within walking distance of the hotel. If we need more rooms there are other hotels in the immediate area. We felt it was important to keep the members and cars together in one place. Sufficient time has been allowed to spend in Warren, Ohio and some of the other events being considered is a catered dinner at the Crawford Automotive Museum, a dinner cruise, car show and other attractions in the area

Our thanks to Jerry and Joanne Vinarcik of our Midwest Region for coordinating these plans for us.

We urge you to start making your plans to attend this once in a lifetime event. Further information will be in the next issues of the NEWS COUNSELORS

If you plan on shipping your Packard to this event, start contacting some of the large car haulers, it is much more economical if you can get several people to ship their cars in one truck. Check Hemmings Motor News for the phone numbers of the larger cross country car haulers.

Space will be limited. To guarantee a reservation send in a non-refundable deposit of \$15.00 to Packards International Motor Car Club, 302 French Street, Santa Ana, CA. 92701

January 18th.

Installation of 1998 Board Members
at the Pala Mesa Resort

with a
Special Presentation
by

Les & Mary Perhacs
showing their newly unveiled
monumental Bronze Sculpture
at the
San Diego International Airport.

PLEASE JOIN US

**JANUARY 18, 1998
AT THE
PAULA MESA RESORT, FALLBROOK, CA.
FOR THE
ANNUAL INSTALLATION OF OFFICERS**

**SHARE WITH LES & MARY PERHACS AS THEY
PRESENT AN ART EXHIBIT & SLIDE SHOW REVEALING THE
MAKING OF THE GIGANTIC BRONZE MONUMENT
WHICH WAS UNVEILED AT THE
SAN DIEGO INTERNATIONAL AIRPORT, ON JANUARY 2ND,
AS SEEN ON THE COVER OF THIS ISSUE.**

**ENJOY A FANTASTIC BRUNCH WHICH WILL INCLUDE;
PASTRIES, BREADS, MUFFINS,
FRUIT, SEVERAL SALADS,
CARVING STATIONS,
OMELETTE BAR,
PEEL & EAT SHRIMP,
DESERTS, DRINKS & ETC.
\$20.00 PER PERSON-TIP & TAX INCLUDED**

**RESERVATIONS REQUIRED NO LATER THAN
JAN. 14TH. CALL BJ HILL AT 619/530/1414**

**SAN DIEGO MEMBERS WILL MEET AT MONTGOMERY WARDS
MISSION VALLEY AT 9:00AM. NORTH COUNTY MEMBERS WILL
MEET AT THE PARK&RIDE AT HYW. 15 & 76 AT 10:00 AM.
WE WILL PROCEED TOGETHER TO THE PALA MESA RESORT
AND PARK OUR PACKARDS AS A GROUP.**



England

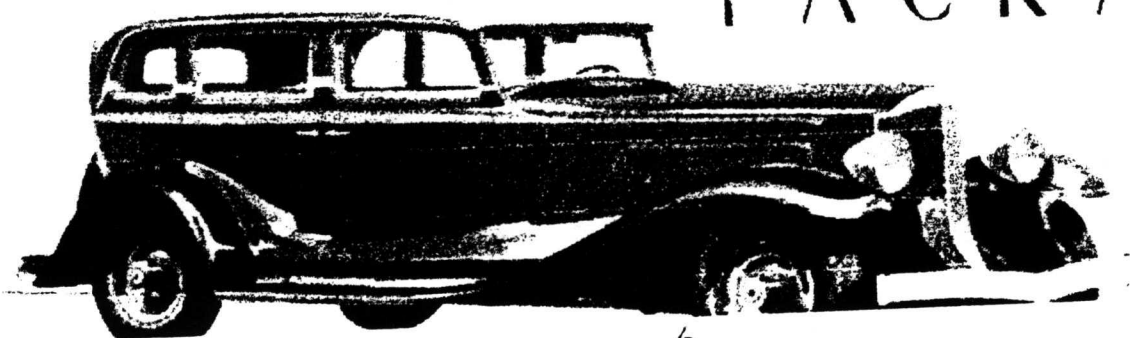
In the maze of London's traffic and on the hedge-bordered lanes of the English country-side more Packards are driven by people of wealth and rank than any other fine American make of car. The distinguished Packard has consistently, and by a wide margin, outsold all other American cars of its class in England



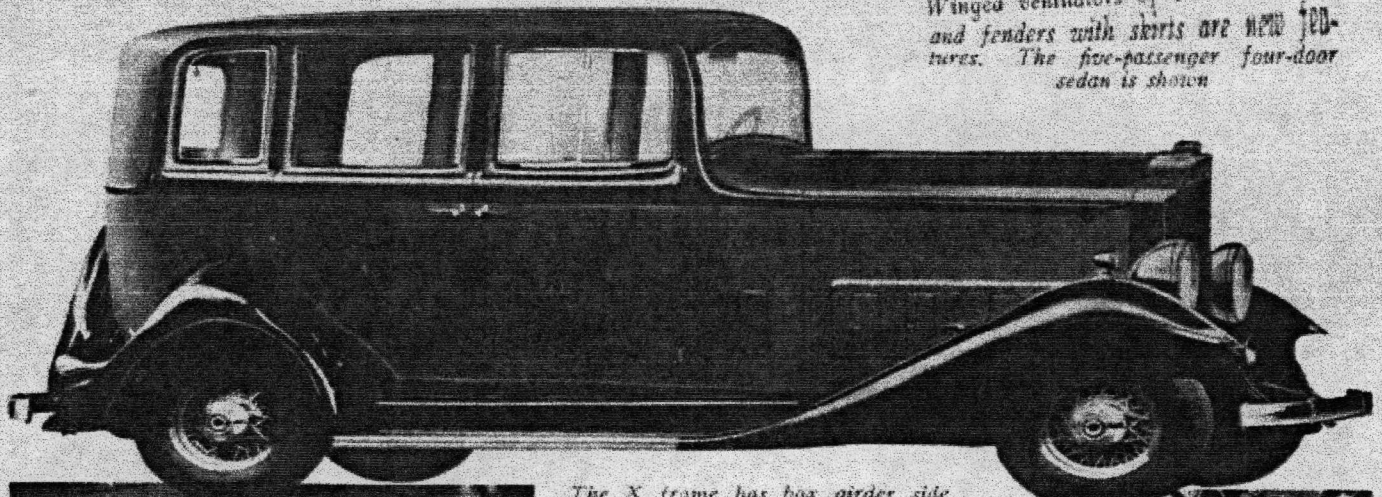
The Packard Light Eight—the new car that introduces truly luxurious transportation to additional thousands—is pictured below in its full grace of line and beauty of color. But you must see the car itself to appreciate its fineness—you must drive it to gain a complete conception of its many performance advantages. ¶ Here is a car that is Packard in design, Packard in quality and, therefore, Packard in name—a car of which Packard is again proud to say "Ask the Man Who Owns One." Yet, because Packard has taken advantage of present economic conditions, lowered prices on fine materials, advanced engineering and new manufacturing processes, it can be offered at a price remarkably low—\$1750 at

the factory for the Five-Passenger Sedan. ¶ The Packard Light Eight is available in four distinctive and completely modern models—all on a chassis of 128 inches with 110 horsepower motor. It embodies Packard's latest engineering advances—Silent Synchro-mesh Transmission, quiet in all three speeds, Finger Control Free-Wheeling, and the new Angleset Rear Axle. Shatter-proof glass throughout, bumpers front and rear and six-ply tires—items charged for as extras on many cars—are included as standard equipment. ¶ Truly, thousands of motorists who for years have admired and wanted the beauty, luxury and distinction of Packard transportation can now enjoy it.

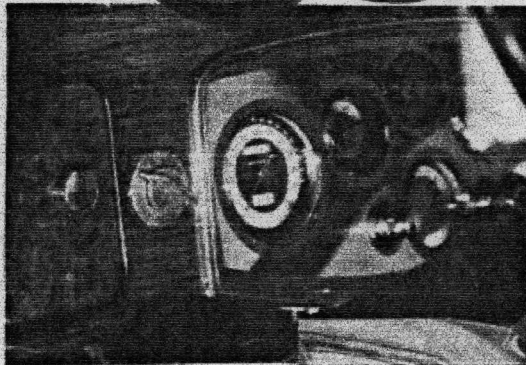
P A C K A R D



The New 1933 Packard



Winged ventilators of Packard design and fenders with skirts are new features. The five-passenger four-door sedan is shown.

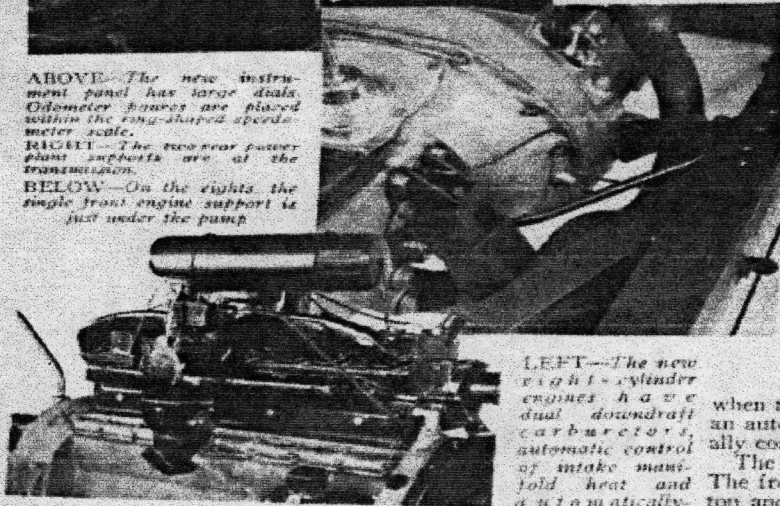
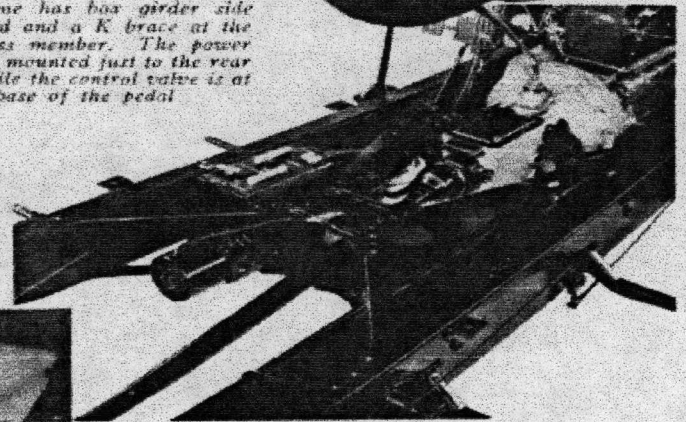


ABOVE—The new instrument panel has large dials. Odometer houses are placed within the cone-shaped speedometer scale.

RIGHT—The two rear power plant supports are at the transmission.

BELOW—On the eights, the single front engine support is just under the pump.

The X frame has box girder side rails forward and a K brace at the radiator cross member. The power brake unit is mounted just to the rear of the X while the control valve is at the base of the pedal.



LEFT—The new eight-cylinder engines have dual downdraft carburetors, automatic control of intake manifold heat and automatically-operated chokes

Packard

More Power, Ventilating System, and Power Braking

A NEW ventilating system, more power, much livelier performance, power braking, smoother, quieter operation, longer life and added beauty are stressed features in the Packard line for 1933. There are three chassis models in five wheelbase lengths, as follows: The Packard Eight, which takes the place of the Standard Eight of last year; the Packard Super-Eight which corresponds to the former De Luxe Eight; and the Packard Twelve.

Engine sizes are unchanged but there has been a marked increase in power in the eights, due principally to the adoption of dual carburetors with the result that the Eight now delivers 120 horsepower instead of 110, and the Super-Eight supplies 145 horsepower as against 135. The horsepower of the Twelve remains 160. Because of additional power and reduced weight the new eights are very much livelier. The carburetors are the downdraft type and since the intake ports slope upward at the block there is no danger of liquid fuel flowing into the cylinders

when the engine is stopped. The carburetors are equipped with an automatic choke and intake manifold heat is also automatically controlled by thermostat.

The new ventilating system is Packard's own development. The front door glass, instead of sliding up and down, is pivoted top and bottom at the front; and the rear section is similarly pivoted at the rear—like double doors. The front section is swung out by a knob while the rear section is moved by hand, being held in any position by a friction collar. The rear quarter windows have ventilators like the front section.

Another Packard feature is the Bendix-BK vacuum-operated power brake system so that the driver is relieved of most of the effort of braking. A control on the instrument board gives four adjustments from very light pedal pressure to that suitable for the heavy foot of a large man.

Other improvements include new three-point rubber engine mountings on the eights which enhance smoothness, more rigid connecting rods with cooling fins, improved cylinder blocks for longer life, new mufflers which give greater silence and less back pressure, redesigned fan blades which reduce noise, improved cooling, dual coils for more positive ignition at high speed, a combination camshaft fuel pump and vacuum pump, the latter operating the dual windshield wipers at open throttle, single-plate clutches of larger diameter with reduced pedal pressure, a synchro-mesh transmission with even quieter gears in all forward speeds, improved ride control, electric oil level gauge, and triple-beam, three-filament headlamps.



Wanted:

**Tour leader for upcoming
First Annual "El Nino" Tour.**

**Hip boots and sandbags a must.
Scuba diving equipment: optional,
but definate plus!!**

Car Scrapping

Eco-Scrap, the UNOCAL subsidiary that runs the scrapping program (and sells the emission credits) is addressing the interests of car collectors by allowing them to view the vehicles in the dismantler's yard and to make offers on anything they want. Vehicles remain in the yard for 45 days before being crushed. Check the weekly car list posted on the web at www.eco-scrap.com. Eco-Scrap's policy is to set aside up to 3% of the vehicles for purchase by collectors. You may also check the SEMA fax-on-demand list for available cars by calling 90.396.0812; ask for document 990. Or check their web site at www.sema.org.

Reprinted from The Spirit of Ecstasy, Rolls-Royce Owners' Club, Inc. Southern California Region Volume 31, Issue 9 - September 1997

**FOR SALE: 1947 Custom Super 8
5 Passenger Sedan, Loaded!
Asking \$16,000.00 Contact
Frank Stoppela 208/336-1020**

**WANTED: 1954 "359" cu. in. straight
eight engine and 1954 Caribbean
wheelwell chrome moldings, front
& rear.
Contact Pat McGill 760/360-0725**

"It's Better To Replate It Than Replace It"



WEST COAST PLATING

2613 TEMPLE HEIGHTS DRIVE
SUITE D
OCEANSIDE, CA 92056

VICTOR RAMOS

(760) 940-8777

**FOR SALE: Set of Chrysler Imperial wire
wheels with caps (3 good, 1 fair).
Bolt pattern same as Packard. \$500.
Harvey Hedgcock 619/679-7084**

MARK YOUR CALENDAR

San Diego's 32nd Annual
BIG 3
Auto Parts Exchange

Qualcomm Stadium
Feb. 28 & Mar 1st, 1998

Public admitted free
Vendor stalls, \$35. ea.



COLIN D. FORT, AEP CTFA
Vice President
San Diego Regional Manager

First American Trust Company

2100 FIFTH AVENUE • SAN DIEGO, CA 92101
(619) 515-3410 • FAX (619) 233-3837

Century 21



Lyle Morton Realtors[®], Inc.
5640 Baltimore Dr.
La Mesa, California 91942
24 Hour (619) 668-4494
Fax (619) 465-2438
Business (619) 464-8111

Rick Hagen
Sales Associate



1993
Office

Each Office Is Independently Owned And Operated

PREDICTOR

PACKARDS INTERNATIONAL
MOTOR CAR CLUB
SAN DIEGO REGION
9030 Carroll Way #1
San Diego, CA. 92121

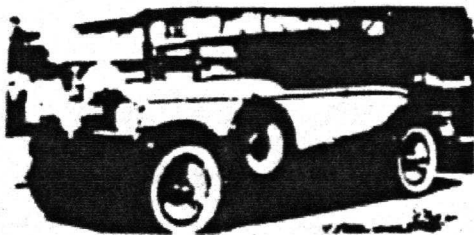
1/98

ADDRESS CORRECTION REQUESTED



LEMON GROVE PLATING

1400 CLEVELAND
NATIONAL CITY, CALIFORNIA 92050



To Packards International Members:

Over the years we have established a reputation for quality plating, and a quality car deserves quality plating. I own a 1928 PACKARD Roadster and know the value you place on your parts. If you have a plating need, come in and ...

Ask The Man Who Owns One

Mrs. Billie Rhodes
President

(619) 474-4424



BRYAN PACKARD REPAIR

1040 'A' WEST AIRPORT RD.
OCEANSIDE, CA 92054

Phone 760.966.0190
Fax 760.966.0723
packardcars@internetMCI.com

Reproduction Parts Used Parts
1935-1942 1935-1942

Packard Parts
JUNIOR MODELS & SENIOR

WALLACE WALMSLEY
(619) 283-3063

4732 BANCROFT ST. #7
SAN DIEGO, CA 92116